

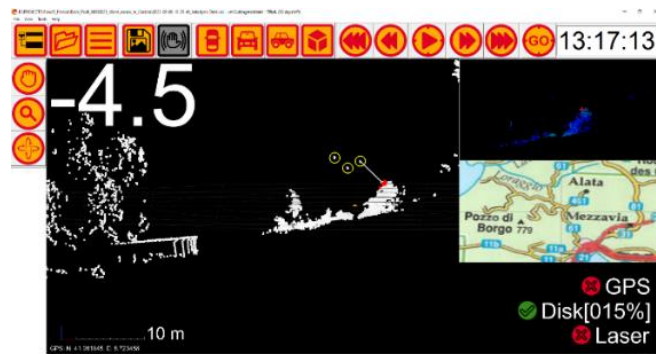


PLCT



PLCT is a real time application that runs on a windows laptop. It uses a Puck sensor to calculate the distance from power lines to vegetation, all in real time while you walk underneath you power line to check the pruning. If any vegetation is too close it will alert you immediately.

The software will show the Lidar data in real time and in a nice cross section you will see the phase lines and all vegetation that is too close. From this you can create a report with the built in GPS.



Technical spec:

Scanner	Velodyne Puck
Laser Range	100 m
Precision	3 cm
Scanner field of view	360°
Connection to PC	WIFI
Operating system	Windows
Platform	Handheld or backpack Lidar
Weight	2.5 kg
Power consumption	40 W
Operating voltage	12 V
Operating temperature	0 to +40 °C
Dimensions	23 x 16 x 17.7 (cm)