



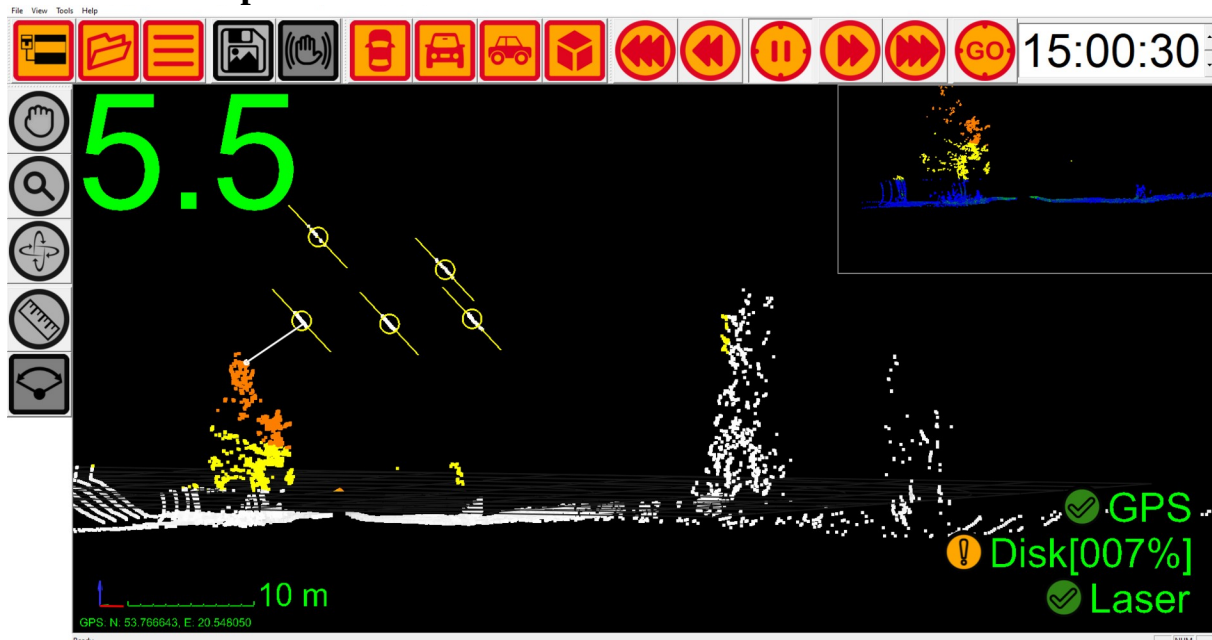
PLCT – Pedestrian Lidar Control Tool

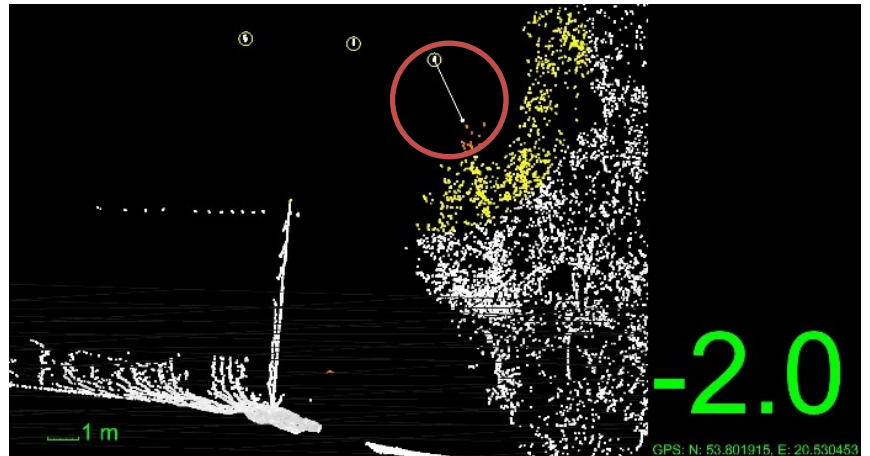


PLCT is a real time application with a lidar mounted on a backpack and a tablet that runs our software. It uses a laser scanner to calculate the distance from power lines to vegetation, all in real time while you walk underneath your power line to check the pruning. If any vegetation is too close it will alert you immediately.



The software will show the Lidar data in real time and in a nice cross section you will see the phase lines and all vegetation that is too close. From this you can create a report with the built in GPS.





Technical specification:

Scanner	Velodyne Puck
Laser Range	100 m
Precision	3 cm
Scanner field of view	360°
Connection to PC	WIFI
Operating system	Windows
Platform	Backpack lidar
Weight	2.5 kg
Power consumption	18 W
Operating voltage	12 V
Operating temperature	-10 to +40 °C
Dimensions	13.2 x 11.2 x 12.9 (cm)